

55 MACDONALD STREET
LAKEMBA NSW 2229

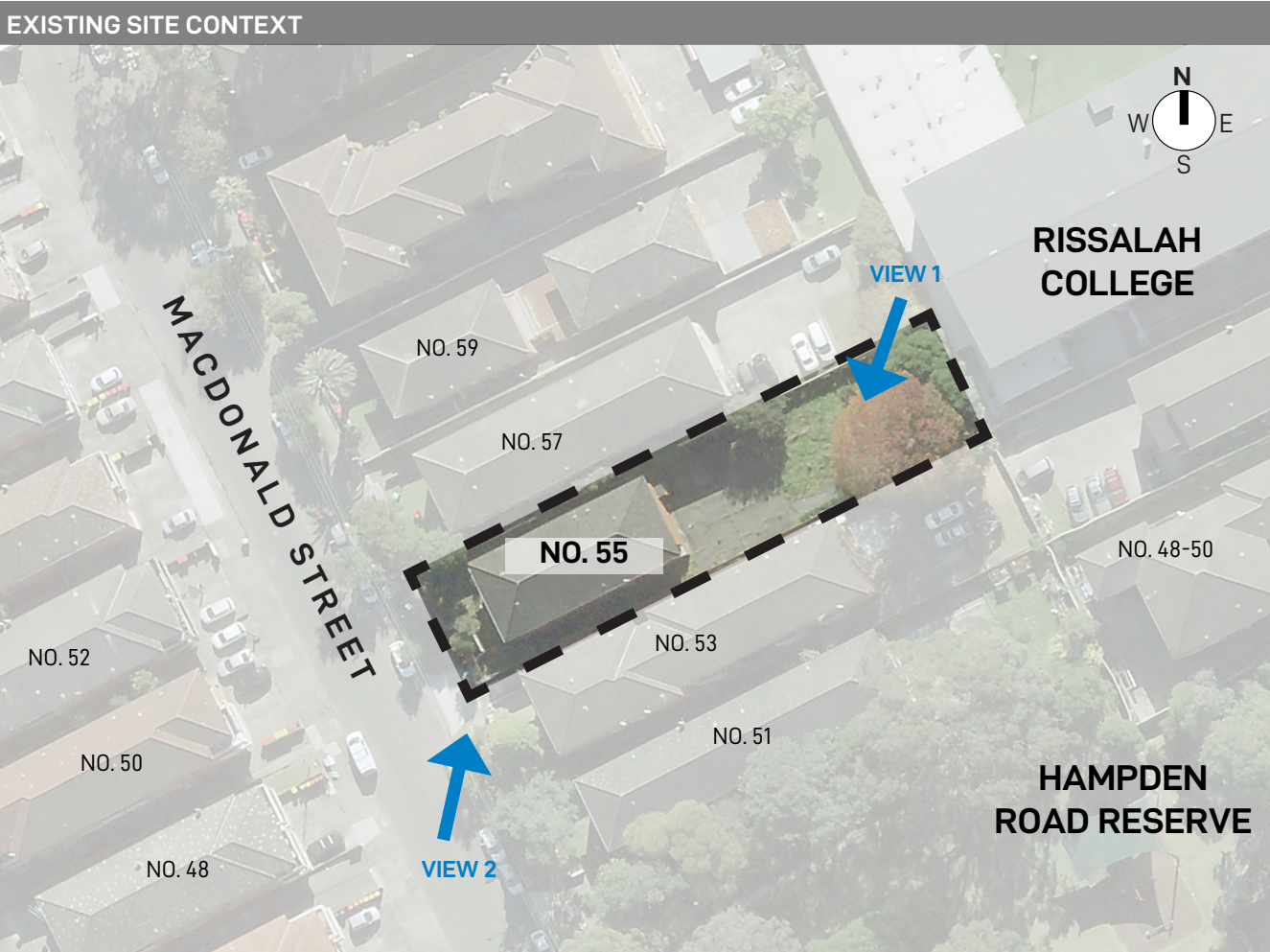
LANDSCAPE DA DOCUMENTATION

DRAWING REGISTER

DRAWING NUMBER	DRAWING NAME	SCALE / SIZE
DA-00	LANDSCAPE COVER SHEET	NTS
DA-01	DESIGN APPROACH	NTS
DA-02	LANDSCAPE PLAN & SECTION	1:200 / A3
DA-03	PLANTING PLAN	1:200 / A3
DA-04	LANDSCAPE DETAILS	1:20 / A3

INDICATIVE PLANT SCHEDULE

CODE	BOTANICAL NAME (COMMON NAME)	MATURE HEIGHT	NATIVE	SPACING	POT SIZE
	TREES				
	CUPANIOPSIS ANACARDIOIDES (TUCKEROO)	4-6M	✓	AS SHOWN	100L
	WATERHOUSEA 'GREEN AVENUE'	6-8M	✓	AS SHOWN	100L
	SCREENING				
	ACMENA 'SUBLIME'	2-3M	✓	4/M²	200MM
	SHRUBS AND GRASSES				
	CORREA 'COASTAL PINK'	2M	✓	4/M²	200MM
	DIANELLA 'CASSA BLUE'	0.5M	✓	6/M²	200MM
	IMPERATA CYLINDRICA	0.5M	✓	6/M²	200MM
	MELALEUCA 'CLARET TOPS'	1.5M	✓	3/M²	200MM
	WESTRINGIA 'ZENA'	0.6M	✓	4/M²	200MM
	GROUNDCOVERS				
	CARPOBOTUS ROSSII (AUSTRALIAN PIG FACE)	0.3M	✓	3/M²	140MM
	DICHONDRA REPENS (KIDNEY WEED)	0.2M	✓	6/M²	140MM
	LOMANDRA 'LITTLE CON'	0.3M	✓	6/M2	140MM



SITE CONTEXT

The site is located on MacDonald Street in Lakemba. It is situated in an area of low density apartment complexes, with a rear frontage to Rissalah College within the City of Canterbury-Bankstown Council Area. The development proposes a demolition of the existing building, to be replaced with an extension of the school grounds consisting of an outdoor playground and small amenities building.

Significant trees on the site are to be retained, and the frontage to MacDonald Street is to feature an upgraded fence with gate as a secondary access for the school.

DESIGN PHILOSOPHY

The landscape design aims to create an enriching and safe environment for children, teachers, and the community. The design aims to provide an area of fun and outdoor education to the students, drawing upon local planting communities and providing amenity for interactive learning and active play.

Planting Selection

The endemic community of the area is the Sydney Turpentine Ironbark Forest which is classified as 'critically endangered' due to the extent of urban sprawl in the area. By using select species from this community we can create a pocket of natural greenery in the suburbs and provide area for further education into these issues.

Safety precautions such as boundary hedge screening, child-safe planting, material selection and fencing are implemented to ensure the health and security of children enrolled at the centre.

Where possible, native plant species have been selected to provide ecological stepping stones, providing native fauna with habitat to strengthen the ecological resilience of the proposed development.

Once established, all selected species require little irrigation and key species have been selected for their tolerance of extreme weather events such as drought, frost and temporary water inundation.

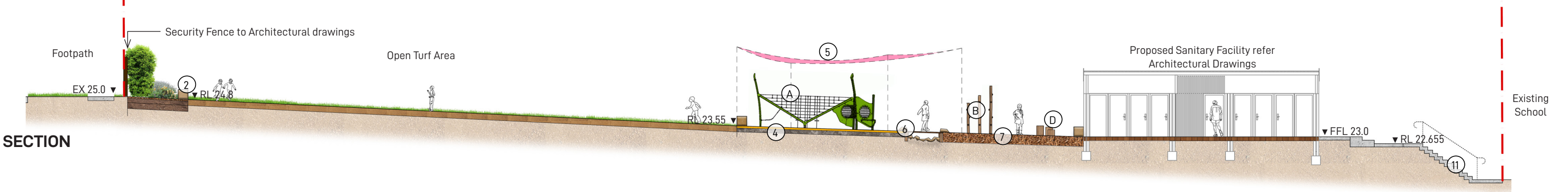
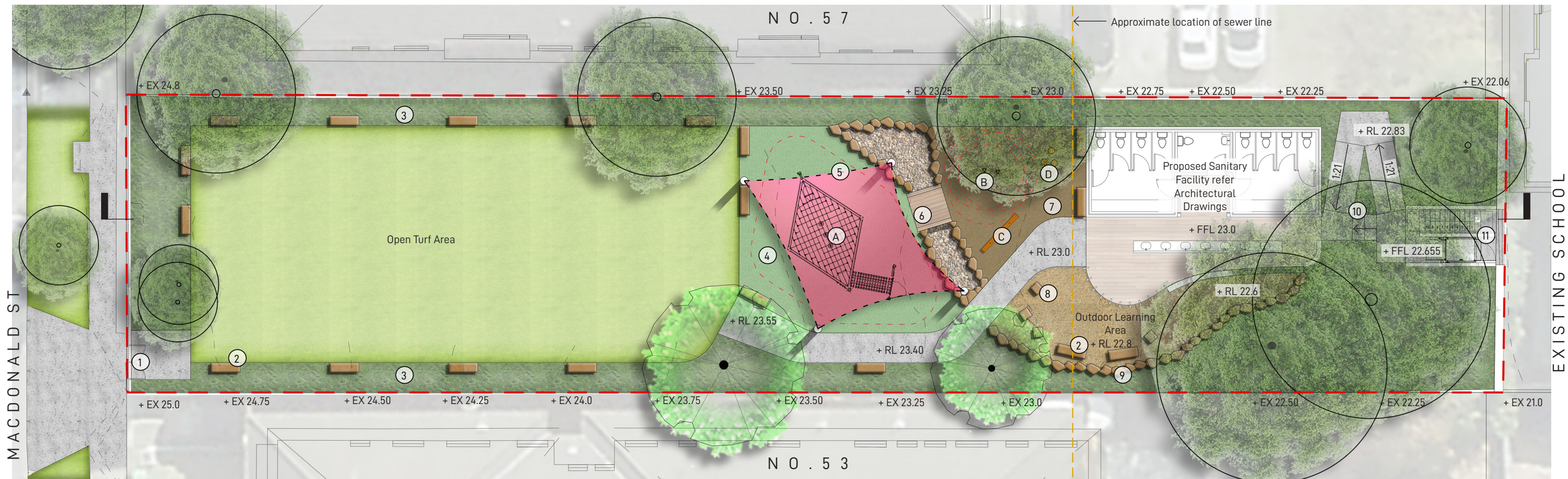
Existing mature trees on the site are to be retained for shade amenity and further complemented by additional planting and shade structures.

Play Equipment

Minimal use of secured play equipment means there is plenty of open space which can be utilised for flexible play, however certain items of fixed equipment have been chosen to provide children with exciting imaginative play opportunities. An accessible pathway is provided around the extent of the site, to provide children and staff with easy access to all play areas.

All proposed play areas have screen planting to the boundary for visual privacy. Nature and bush play elements have been incorporated through the use of timber stepping logs, a small timber bridge, and native planting of textural interest to provide thought provoking experiences which will challenge children and aid in their mental and physical growth. Adequate seating is provided for children and staff to easily rest, socialise and supervise play.





LEGEND

- Boundary Line
- Play equipment SFZ
- EX Existing Spot Level
- FFL Finish Floor Level
- RL Proposed Spot Level
- 1 Proposed Security Gate refer Architectural drawings
- 2 Proposed Sandstone block for seating
- 3 Proposed planting area with screen planting
- 4 Softfall play space
- 5 Proposed shade sail to future details
- 6 Proposed dry creek with timber bridge
- 7 Playground mulch area
- 8 Sandstone block
- 9 Sandstone boulder rock edge
- 10 Proposed ramp access
- 11 Proposed stairs & lift platform refer architectural drawings

PLAY ELEMENTS



A Climbing Play Equipment
J57007 as supplied by Proludic



B Climbing Logs
Sol57010 as supplied by Proludic

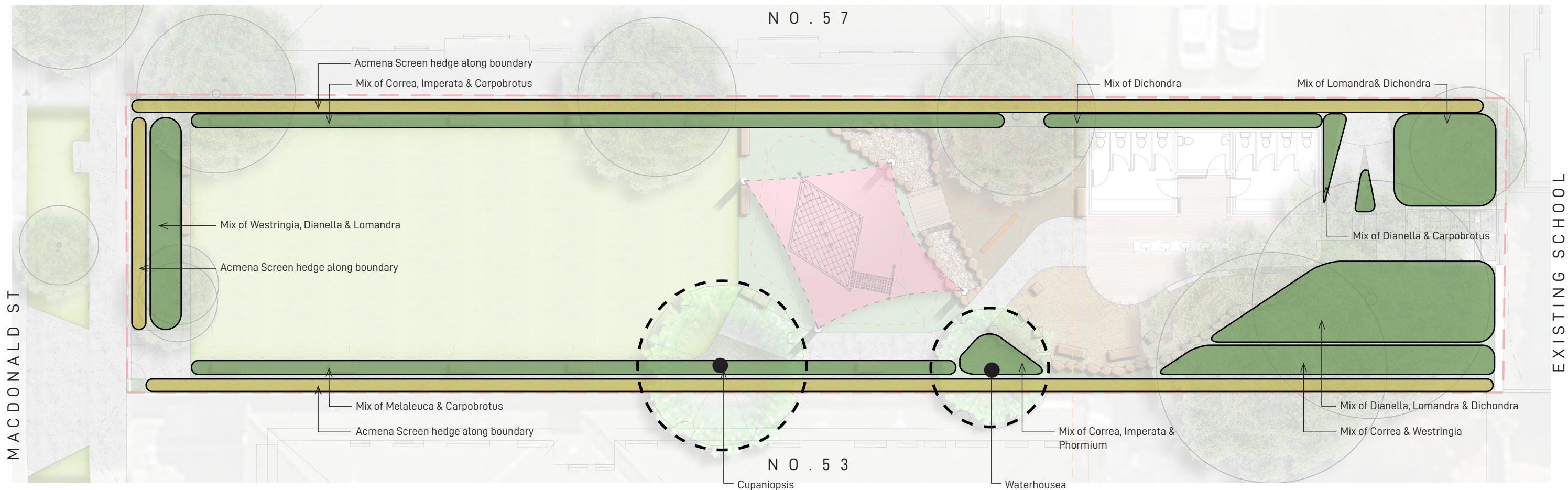


C Balance Log
PN1187 as supplied by Playworks



D Climbing Logs
Sol4904 as supplied by Proludic





INDICATIVE PLANT IMAGES

TREES



SCREENING



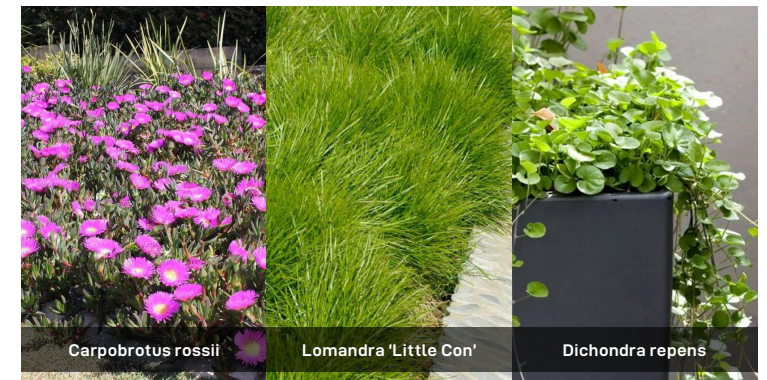
SHRUBS



GRASSES

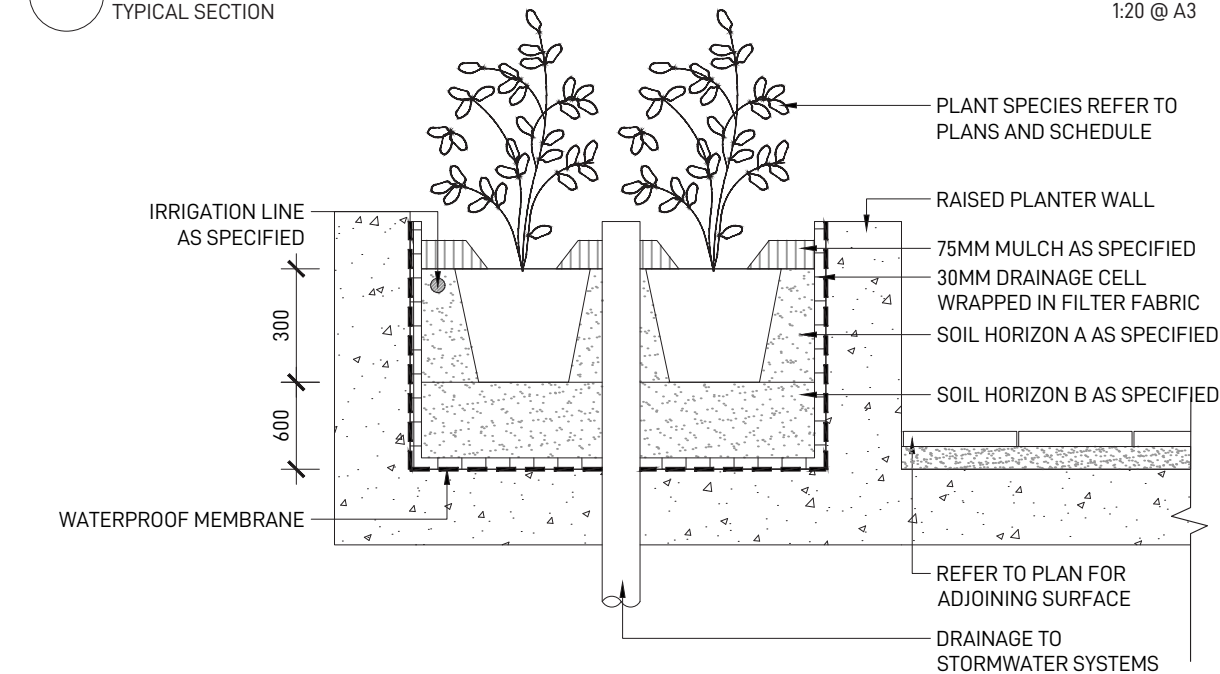
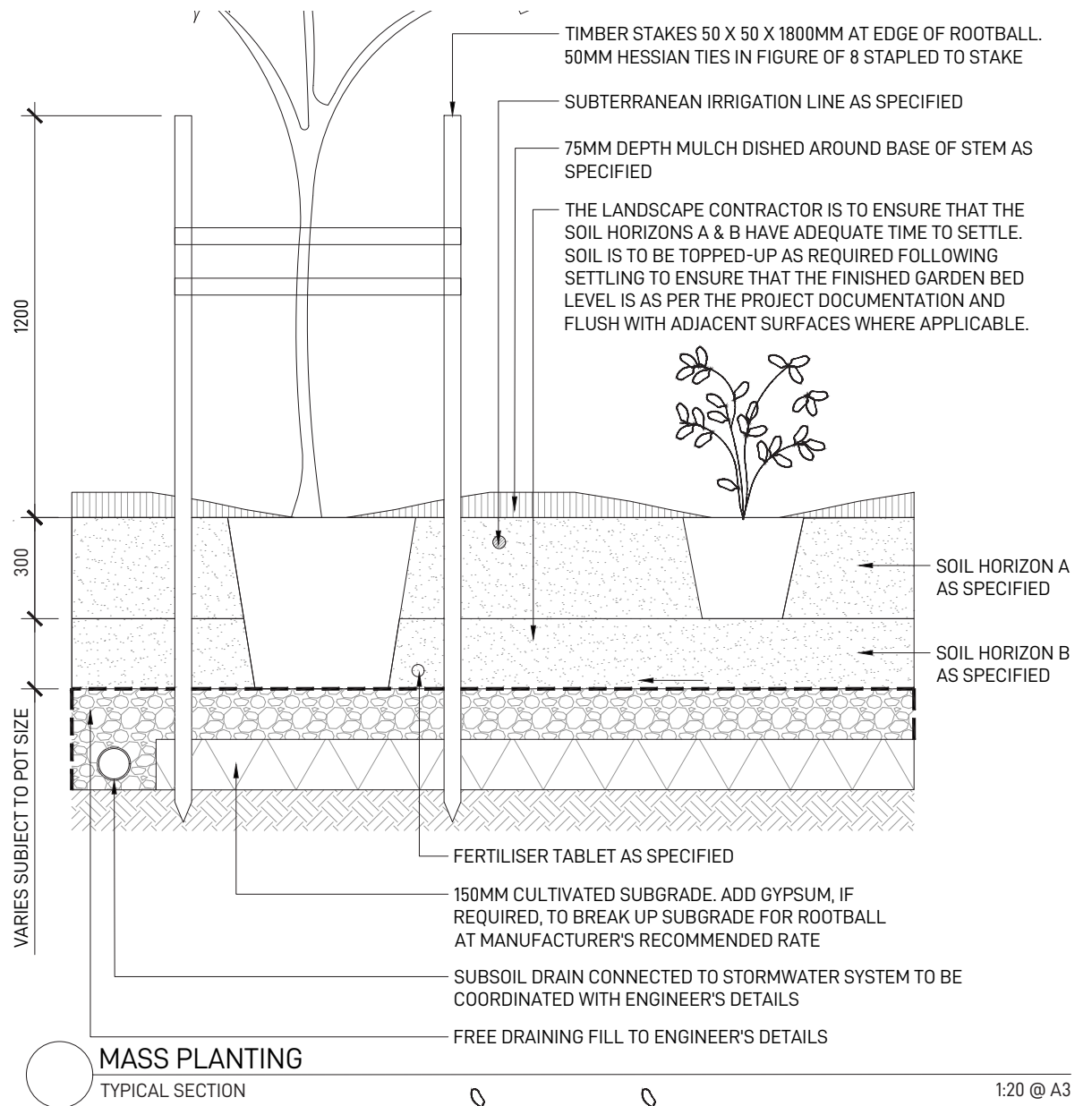


GROUNDCOVERS



1:200 / A3

0 1 2 3 4 5m



OUTLINE LANDSCAPE SPECIFICATION

GENERAL

MAINTENANCE SHALL MEAN THE CARE AND MAINTENANCE OF THE LANDSCAPE WORKS BY ACCEPTED HORTICULTURAL PRACTICE AS RECTIFYING ANY DEFECTS THAT BECOME APPARENT IN THE LANDSCAPE WORKS UNDER NORMAL USE. THE LANDSCAPE CONTRACTOR SHALL ATTEND THE SITE ON A WEEKLY BASIS TO MAINTAIN THE LANDSCAPE WORKS FOR THE FULL TERM APPROVED AT CC STAGE OF THE MAINTENANCE PERIOD (COMMENCING FROM PRACTICAL COMPLETION).

RUBBISH REMOVAL

DURING THE TERM OF THE MAINTENANCE PERIOD THE LANDSCAPE CONTRACTOR SHALL UNDERTAKE RUBBISH REMOVAL FROM THE SITE ON A WEEKLY BASIS TO ENSURE THE SITE REMAINS IN TIDY CONDITION.

WEED ERADICATION

WEED GROWTH THAT MAY OCCUR IN, PLANTED OR MULCHED AREAS IS TO BE REMOVED USING ENVIRONMENTALLY ACCEPTABLE METHODS I.E. NON-RESIDUAL GLYPHOSATE HERBICIDE, (E.G. 'ROUNDUP', APPLIED IN ACCORDANCE WITH THE MANUFACTURER'S DIRECTIONS) OR HAND WEEDING.

TREE REPLACEMENT

TREES SHALL SHOW SIGNS OF HEALTHY VIGOROUS GROWTH AND BE FREE FROM DISEASE AND NOT EXHIBIT SIGNS OF STRESS PRIOR TO HANDOVER TO THE CLIENT. ANY TREES OR PLANT THAT DIE OR FAIL TO THRIVE, OR ARE DAMAGED OR STOLEN WILL BE REPLACED. REPLACEMENT MATERIAL SHALL HAVE THE MAINTENANCE PERIOD EXTENDED IN ACCORDANCE WITH THE LANDSCAPE CONTRACT CONDITIONS. TREES AND PLANT MATERIALS SHALL BE EQUAL TO THE MINIMUM REQUIREMENTS OF SPECIES SPECIFIED AND APPROVED MATERIAL DELIVERED TO SITE. SHOULD THE CONDITION DECLINE FROM THE APPROVED SAMPLE THE SUPERINTENDENT RESERVES THE RIGHT TO REJECT THE TREE / PLANTS. FREQUENCY: AS REQUIRED.

PRUNING

SELECTIVE PRUNING MAY BE REQUIRED DURING THE ESTABLISHMENT PERIOD TO PROMOTE A BALANCED CANOPY STRUCTURE. THESE ACTIVITIES SHALL BE CARRIED OUT TO THE BEST HORTICULTURAL AND INDUSTRY PRACTICE. ALL PRUNED MATERIAL IS TO BE REMOVED FROM SITE.

IRRIGATION

A LOW VOLUME DRIP IRRIGATION SYSTEM MAY BE INSTALLED AT THE DISCRETION OF THE DEVELOPER. POSITION OF CONTROL BOX, SOLENOIDS AND IRRIGATION CONDUITS TO BE DESIGNED BY QUALIFIED IRRIGATION ENGINEER AT CC STAGE. CONTROLLERS SHALL BE MOUNTED ON A STABLE WALL, POWER RACK, OR FORMED AND CONSTRUCTED CONCRETE BASED PEDESTAL MOUNT. PERFORMANCE SPECIFICATION TO BE PROVIDED BY LANDSCAPE ARCHITECT, NOMINALLY 25MM DELIVERED TO PLANT AREAS EACH WEEK DURING ESTABLISHMENT (DEPENDING ON WEATHER CONDITIONS). AFTER ESTABLISHMENT, IRRIGATION RATES CAN BE DECREASED IN CERTAIN AREAS OF THE LANDSCAPE DEPENDING ON THE SPECIES.

WATERING

IMPLEMENT AN APPROPRIATE HAND WATERING REGIME IN AREAS NOT IRRIGATED IN ASSOCIATION WITH CURRENT WATERING PROGRAMME TO MAINTAIN PLANT HEALTH AND VIGOUR. THE PROGRAM SHALL REFLECT SEASONAL CONDITIONS AND PLANT SPECIES. FREQUENCY: WEEKLY OR AS REQUIRED.

DRAINAGE

ALL LANDSCAPE AREAS ARE TO HAVE POSITIVE DRAINAGE TO SW SYSTEMS. IF AREAS OF POOR DRAINAGE ARE IDENTIFIED ON SITE THEN THIS SHOULD BE BROUGHT TO THE SITE SUPERINTENDENTS ATTENTION. INSTALL AGG LINES IF REQUIRED.

SOILS

HORIZON A - GARDEN BEDS ON NATURAL GROUND
A SANDY LOAM TO CLAY LOAM TOPSOIL MIX DESIGNED FOR GENERAL PURPOSE, ON-GRADE LANDSCAPE GARDEN BED PLANTING OF GRASSES, WOODY AND HERBACEOUS ANNUALS AND PERENNIALS THAT HAVE HIGH NUTRIENT REQUIREMENT FOR SUSTAINED OPTIMUM GROWTH, AND ARE NOT SUBJECT TO COMPACTION BY PEDESTRIAN AND OTHER FOOT TRAFFIC. HEAVIER TEXTURED SOILS IN THIS SPECIFICATION MAY REQUIRE ENGINEERED SOLUTIONS WHERE EXCESSIVE WETNESS IS ANTICIPATED. NOTE THAT ORGANIC SOIL VARIANT SHOULD NOT BE CHOSEN FOR LOW PLANTINGS AND SHOULD NOT BE USED BELOW 300MM. PLANTING METHODS INCLUDE DIRECT SEEDING, TUBE AND POTTED SPECIMENS UP TO 45L

HORIZON B - GARDEN BEDS ON SLAB

THIS SPECIFICATION DESCRIBES THE FORMULATION OF AN OPEN GRANULAR WELL DRAINED GROWING MEDIA WITH A SATURATED DENSITY OF LESS THAN 2400 KG/M3 (2.4KG/L) FOR USE IN ON-SLAB APPLICATIONS, INCLUDING GREEN ROOFS WITH AN EXPECTATION OF LONGEVITY. IT IS A TOPSOIL FORMULATION TO BE USED IN THE SURFACE 300MM OF ALL ON-SLAB INSTALLATIONS INCLUDING PLANTER BOXES, CONTAINERS AND GARDEN BEDS. IN ORDER TO MAINTAIN STRUCTURE AND POROSITY OVER EXTENDED PERIODS, AND TO AVOID SLUMPING AND VOLUME LOSS OVER TIME, THE FORMULATION MUST EMPLOY LOW DENSITY MINERAL COMPONENTS SUCH AS ASH, PERLITE, SCORIA, PUMICE AND DIATOMACEOUS EARTH, OR ARTIFICIAL COMPONENTS SUCH AS UREA FORMALDEHYDE AND STYROFOAM. PHYSICALLY THE MEDIA PROPERTIES OF A POTTING MEDIA AND IS ASSESSED USING THE METHODOLOGY OF AS 3743.

CULTIVATION

ALL GARDEN BEDS TO BE CULTIVATED TO A MIN DEPTH OF 150MM AND TREE PITS TO THE DEPTH OF THE ROOT BALL ONLY. IF ADDITIVES SUCH AS GYPSUM ARE REQUIRED CONDUCT THIS AFTER CULTIVATION INTO THE TOP 100MM OF SOIL.

PLANTING

ALL PLANTING TO BE GROWN TO NATSPEC SPECIFICATIONS. CONTRACTOR TO PREPARE SITE FOR PLANTING INCLUDING WATERING, HANDLING, SETTING OUT AND EXCAVATION. EXCAVATE A HOLE FOR EACH PLANT LARGE ENOUGH TO PROVIDE NOT LESS THAN 100MM ALL AROUND THE ROOT SYSTEM OF THE PLANT. FOR TREE PLANTING EACH HOLE SHALL BE DUG WITH A SHOVEL, BACKHOE OR SIMILAR TOOL. INDIVIDUAL HOLES SHALL BE EXCAVATED TO ALLOW ROOT SYSTEM TO SIT FLAT ON THE EXCAVATED HOLE AND 400MM TO EACH SIDE OF THE ROOT SYSTEM. BACKFILL PLANTING HOLES WITH EXISTING SITE SOIL AND TOPSOIL AS DESCRIBED IN SECTION 'SOIL', PLANT / TREE SHALL BE SET PLUMB, WITH THE ROOT BALL SET SLIGHTLY BELOW THE FINAL SOIL LEVEL.

MULCHING

THE LANDSCAPE CONTRACTOR SHALL SUPPLY AND INSTALL 10MM PINE BARK MULCH TO ALL GARDEN BEDS SHOWN ON THE LANDSCAPE PLANS, TO A MINIMUM DEPTH OF 75MM. THE MULCH IS TO BE EXTENSIVELY TESTED FOR FOREIGN OR HAZARDOUS MATERIALS PRIOR TO PRECUREMENT. ALL MULCH IS TO BE FREE OF DELETERIOUS MATTER SUCH AS SOIL, WEEDS AND STICKS. MULCHED SURFACES ARE TO BE KEPT CLEAN AND TIDY AND FREE OF ANY DELETERIOUS MATERIAL AND FOREIGN MATTER. REINSTATE DEPTHS TO A UNIFORM LEVEL OF 75MM WITH MULCH AS SPECIFIED, MULCH TO BE FREE OF ANY WOOD MATERIAL IMPREGNATED WITH CCA OR SIMILAR TOXIC TREATMENT. MAINTAIN WATERING RINGS AROUND TREES. TOP UP MULCH LEVELS PRIOR TO HANDOVER TO CLIENT.

PEST AND DISEASE CONTROL

THE LANDSCAPE CONTRACTOR SHALL SPRAY FOR PESTS AND DISEASE INFESTATIONS WHEN THE PEST AND FUNGAL ATTACK HAS BEEN POSITIVELY IDENTIFIED AND WHEN THEIR POPULATIONS HAVE INCREASED TO A POINT THAT WILL BECOME DETRIMENTAL TO PLANT GROWTH. APPLY ALL PESTICIDES TO MANUFACTURER'S DIRECTIONS. FREQUENCY: WEEKLY INSPECTION

FERTILISING

PELLETS SHALL BE IN THE FORM INTENDED TO UNIFORMLY RELEASE PLANT FOOD ELEMENTS FOR A PERIOD OF APPROXIMATELY NINE MONTHS EQUAL TO SHIRLEYS KOKEI PELLETS, ANALYSIS 6.3:1.8:2.9 OR SIMILAR APPROVED. KOKEI PELLETS SHALL BE PLACED AT THE TIME OF PLANTING TO THE BASE OF THE PLANT, 50MM MINIMUM FROM THE ROOT BALL AT A RATE OF TWO PELLETS PER 300MM OF TOP GROWTH TO A MAXIMUM OF 8 PELLETS PER TREE. GENERALLY CHECK FOR SIGNS OF NUTRIENT DEFICIENCIES (YELLOWING OF LEAVES, FAILURE TO THRIVE), AND ADAPT FERTILISER REGIME TO SUIT. FERTILISER SHOULD BE APPLIED AT THE BEGINNING AND THE END OF THE (SUMMER) GROWING SEASON.